

2025

Foundation of the CMSC SUPPORTER PROSPECTUS



FOUNDATION
of the Consortium of
Multiple Sclerosis Centers

Support Opportunities
at the CMSC Annual Meeting

MAY 28 -31, 2025

PHOENIX CONVENTION CENTER

PHOENIX, ARIZONA



FOUNDATION OF THE CMSC EVENT WILL BEGIN ON MAY 27, 2025

The Foundation of the CMSC Pays Tribute to the Memory of our Beloved June Halper



June's vision and the FCMSC's inception

The Foundation was established in 1999 to improve education and research in the field of Multiple Sclerosis (MS) and to enhance the quality of life for those living with MS. June Halper, a key founding member of the Foundation of the CMSC, envisioned a world where individuals battling with MS receive optimal care and healthcare professionals have the necessary resources, training, and support to provide such care. Fueled by this vision, the Foundation created programs that aim to increase the workforce of neurologists, researchers, nursing professionals, mental health professionals, and rehabilitation professionals committed to delivering MS care.



The Birth of the MS Mentorship Forum

Among the impactful programs introduced is the MS Mentorship Forum. In 2015, the Foundation took significant strides in preparing for the Multiple Sclerosis Workforce of the Future. As the global MS population reached 2.3 million in 2013*, it became evident that there was a growing demand for more healthcare professionals specializing in MS. Recognizing the Foundation's ability to mentor Residents and Fellows through its extensive network of MS specialists, the MS Mentorship Forum was established. Backed by June's unwavering dedication, a pilot program was initiated in January 2015 at an airport hotel in Newark, NJ, which received favorable feedback from scholars and faculty. This success led to the decision to further evolve it into a permanent program for the Foundation of the CMSC.



Let's carry forward June's legacy

Let us honor June's legacy by supporting the Foundation's mission to build the MS Workforce of the Future and make a greater impact on the lives of those affected by MS!



Thank you 

PROCEEDS FROM THE SUPPORT OPPORTUNITIES INCLUDED IN THIS PROSPECTUS WILL HELP THE FCMSC IN THEIR MISSION TO ADVANCE THE MS WORKFORCE OF THE FUTURE.



Multiple Sclerosis Mentorship Forum

EDUCATION PROGRAM ➔ \$35,000 (Multiple Supporters)

(to be held in conjunction with the CMSC Annual Meeting)

The MS Mentorship Forum is a unique educational program designed for trainees who are interested in or have recently entered the field of MS practice. Participants will benefit from specialized training in MS from expert faculty members as well as discussions from peer mentors about networking and mentoring opportunities that will facilitate their successful advancement in their field of specialization. In addition to the Forum itself and throughout the Annual Meeting, more opportunities will be available to network with other attendees and faculty and guest speakers. The Mentorship Forum Scholars will also benefit from the many educational sessions offered during the week of the CMSC Annual Meeting.

SUPPORTERS WILL BE RECOGNIZED IN THE FORM OF:

- Supporters' name in the Mentorship Program
- Supporters' name prominently placed on signage at the Mentorship Forum
- Recognition by FCMSC leadership in opening remarks and reserved seating
- Four (4) seats at the Scholar Recognition Luncheon
- Acknowledgement on www.cmscfoundation.org

The program kicks off the day before the opening day of the CMSC Annual Meeting. The forum will be announced to the CMSC and IOMSN mailing lists and social media.

FORUM DINNER ➔ \$20,000 (Exclusive)

The in-seat Mentorship Forum Dinner provides a platform for direct engagement. Attendees will have the opportunity to be seated with esteemed faculty members and program mentors, creating an intimate setting conducive to meaningful discussions and guidance.

SUPPORTERS WILL BE RECOGNIZED IN THE FORM OF:

- Acknowledgement in Dinner program
- Supporters' name prominently placed on signage
- Recognition by FCMSC leadership and reserved seating
- Four (4) seats at the Mentorship Forum Dinner
- Acknowledgement on www.cmscfoundation.org

FORUM BREAKFAST ➔ \$2,500 (Multiple Supporters)

FORUM LUNCH ➔ \$2,500 (Multiple Supporters)

The Forum Breakfast and Lunch are designed to offer a relaxed and friendly environment for networking, allowing attendees to engage with MS lead experts and foster valuable professional relationships.

SUPPORTERS WILL BE RECOGNIZED IN THE FORM OF:

- Acknowledgement in the respective **Breakfast or Lunch** program
- Supporters' name prominently placed on signage
- Acknowledgement on www.cmscfoundation.org

10th ANNIVERSARY PUBLICATION ➔ \$5,000 (One-time Publication)

In celebration of the MS Mentorship Forum's 10th anniversary, the Foundation of the CMSC will create a one-time publication that features the accomplishments and current endeavors of our distinguished Alumni.

SUPPORTERS WILL BE RECOGNIZED IN THE FORM OF:

- Name and logo on the publication
- Acknowledgement on www.cmscfoundation.org
- Available in print and online version



2025 FCMSC Scholarships at the CMSC Annual Meeting

The Annual Meeting of the Consortium of Multiple Sclerosis Centers (CMSC) is the largest and most comprehensive meeting in North America focusing on all aspects of MS care and related research. Each year, the Foundation of the CMSC funds scholarships to attend the Annual Meeting of the CMSC. These scholarships are intended to encourage growth and excellence for all recipients in the comprehensive clinical care of MS. Attendees will benefit from didactic programs, workshops, professional development opportunities, poster sessions, and many opportunities to meet and share ideas with mentors and colleagues in the field. Qualified candidates will be selected by an independent Review Committee consisting of representatives from the FCMSC/CMSC.

**Support
of five (5)
scholarships in
any category is
\$15,000.**

JUNE HALPER 2025 MS NURSING SCHOLARSHIP

The June Halper MS Nursing Scholarship will award nurses with scholarships to attend the Annual Meeting of the Consortium of MS Centers. Nurses who are not yet certified in MS will be given preference. The scholarship program will offer participants the opportunity to network with the leadership of the International Organization of MS Nurses (IOMSN), which convenes during the Annual Meeting.

THE SUSAN E. BENNETT MS REHABILITATION ANNUAL MEETING SCHOLARSHIP

Rehabilitation in MS is one of the many multidisciplinary focuses of the meeting each year. Scholarships will be awarded to distinguished graduate students enrolled in accredited rehabilitation programs and will cover expenses related to attendance at the Annual Meeting of the Consortium of Multiple Sclerosis Centers. Qualified students will demonstrate a particular interest in the field of multiple sclerosis rehabilitation.

SUPPORTER NAMED SCHOLARSHIP

The FCMSC will consider supporter suggested scholarships.

MS MENTAL HEALTH ANNUAL MEETING SCHOLARSHIP

Mental Health in MS is one of the many multidisciplinary focuses of the meeting each year. Scholarships will be awarded to mental health professionals and will cover expenses related to attendance at the Annual Meeting of the Consortium of Multiple Sclerosis Centers. Qualified applicants will demonstrate a particular interest in the field of multiple sclerosis.

MEDICAL STUDENT SCHOLARSHIP

Scholarships will be awarded to distinguished students enrolled in Medical Schools to cover expenses related to attendance at the Annual Meeting of the Consortium of Multiple Sclerosis Centers. Qualified students will demonstrate an interest in the field of multiple sclerosis.

SUPPORTERS WILL BE RECOGNIZED IN THE FORM OF:

- **Supporters' name in the application materials and flyers**
- **Supporters' name prominently placed on signage at the CMSC Annual Meeting.**
- **Acknowledgement on www.cmscfoundation.org**



FCMSC Scholar Events

SCHOLAR RECEPTION> \$7,500

Wednesday night, May 28th, 2025

This Reception is an informal networking event for all the Foundation Scholars and Mentors to enjoy time off from the busy conference schedule.

SUPPORTERS WILL BE RECOGNIZED IN THE FORM OF:

- Supporters' name in the invitation emails
- Supporters' name prominently placed on signage at the Scholar Reception
- Reserved seating at the reception
- Acknowledgement on www.cmscfoundation.org

SCHOLAR RECOGNITION LUNCHEON> \$10,000

Thursday, May 29th, 2025

This event recognizes honorees for various awards, and brings together recipients, mentors, and leaders in MS care for an afternoon of networking and camaraderie that truly captures the spirit of the Annual Meeting. Rewarding and recognizing outstanding contributions to the field of MS across a variety of settings and disciplines is an important way to set an example for others, whether they are professionals-in-training or highly experienced in MS patient care and research.

SUPPORTERS WILL BE RECOGNIZED IN THE FORM OF:

- Supporters' name in the invitation emails
- Supporters' name in Scholars' Luncheon Program and Scholar Recognition Handbook
- Supporters' name prominently placed on signage at Scholars' Luncheon
- Recognition by FCMSC leadership in opening remarks and reserved seating
- Four (4) seats at the Scholars' Luncheon
- Acknowledgement on www.cmscfoundation.org

2024 SCHOLAR RECEPTION AND LUNCHEON - NASHVILLE, TN



“Presenting at a conference is a key part of learning how to develop and conduct research that is pertinent to a field. It also allows students to learn how to communicate the research they do to others in a succinct and well thought out manner. It really opened up the opportunity for upper level research to be conducted as a medical student, which is a rare opportunity.”

- FCMSC Medical Student Research Scholar



FCMSC Sunrise Yoga

The FCMSC Sunrise Yoga Program is designed to help Annual Meeting attendees de-stress and rejuvenate as they wrap up the annual meeting week. This session will help participants integrate insights and experiences, leaving them relaxed and refreshed as they return to their daily routines.



YOGA PROGRAM

.....▶ **\$6,000** (Multiple Supporters)

This program will consist of one-hour session which will take place on Friday, May 30, 2025 at 6-7AM. The event will be promoted as a way for meeting attendees to de-stress after a busy week of learning, networking, and participation in all of the activities that make up CMSC's Annual Meeting.

SUPPORTERS WILL BE RECOGNIZED IN THE FORM OF:

- Name and logo on e-Newsletter to about 10,000 healthcare professionals in the United States and Canada
- FREE registration bag insert for 1,500 full-color YOGA postcards
- Name and logo on giveaways to be distributed to all participants (we anticipate 50 participants)
- Prominent signage at Yoga program, visible to participants and other Annual Meeting attendees
- Verbal acknowledgement at Yoga program
- Acknowledgement on www.cmscfoundation.org

2024 SUNRISE YOGA PROGRAM - NASHVILLE, TN





2025 SUPPORT OPPORTUNITIES

MENTORSHIP FORUM

- Education Program (Multiple Supporters) \$ 35,000
- Forum Breakfast (Multiple Supporters) \$ 2,500
- Forum Lunch (Multiple Supporters) \$ 2,500
- Forum Dinner (Exclusive) \$ 20,000
- 10th Year Anniversary Publication \$ 5,000

2025 FCMSC SCHOLARSHIPS

Select the type of scholarships you prefer to support.

Indicate the number of Scholars you intend to support.

- | | |
|---|--|
| <input type="checkbox"/> Susan E Bennett Rehab Scholars | <input type="checkbox"/> 5 Scholars <input checked="" type="radio"/> \$15,000 |
| <input type="checkbox"/> June Halper MS Nurse Scholars | <input type="checkbox"/> 10 Scholars <input checked="" type="radio"/> \$30,000 |
| <input type="checkbox"/> MS Mental Health Scholars | <input type="checkbox"/> 15 Scholars <input checked="" type="radio"/> \$45,000 |
| <input type="checkbox"/> Medical Student Scholars | <input type="checkbox"/> 20 Scholars <input checked="" type="radio"/> \$60,000 |
| <input type="checkbox"/> Supporter Named Scholars | |

FCMSC SCHOLAR EVENTS

- Scholar Reception \$ 7,500
- Scholar Recognition Luncheon \$ 10,000

SUNRISE YOGA

- Yoga Program (Multiple Supporters) \$ 6,000

TOTAL PURCHASE AMOUNT:

► **SUBMISSION DEADLINE**
March 10, 2025

► QUESTIONS

SUPPORT OPPORTUNITIES

Marguerite Herman
MHERMAN@MSCARE.ORG
 (201) 487-1050 x 105

FCMSC PROGRAMS

Nancy Chazen, MS, CSW
NANCY.CHAZEN@MSCARE.ORG
 (201) 487-1050 x 107

SUPPORTER INFORMATION

Organization Name:		
Contact Name:		
Address:		
City:	State:	Zip Code:
Country:		
Phone:		
Email Address:		

PAYMENT INFORMATION

- Check Enclosed** All check payments must be in US dollars drawn on any US bank.
 Make check payable to: Foundation of the Consortium of MS Centers | 3 University Plaza Drive, Suite 116, Hackensack, NJ 07601
- Electronic Funds Transfer** (Please email kwalters@mscare.org for wire transfer information.)
- Credit Card** (a 5% administrative fee will be added to your total payment due*)
 *Administrative fee is only charged for expenses in excess of \$5,000. Non-profit organizations are exempt from this fee.

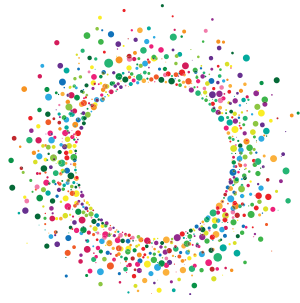
- Visa
- Mastercard
- American Express
- Discover

Name of Cardholder: _____
 Signature: _____
 Card Number: _____
 Expiration Date: _____

REPRESENTATIVE: _____

SIGNATURE: _____

DATE: _____



FOUNDATION
of the Consortium of
Multiple Sclerosis Centers

3 University Plaza Drive, Suite 116, Hackensack, NJ 07601
Telephone No: (201) 487-1050 | Fax No: (862) 772-7275

info@cmscfoundation.org
www.cmscfoundation.org



Please support the MS Workforce of the Future! *One* **TEAM** WITH *One* **DREAM**